

SWAT DISTRICT DEVELOPMENT AUTHORITY

Brief of SDDA Swat.

INTRODUCTION

Swat District Development Authority Established in 1989 Vide Notification No.01.02.22/11345, dated 29/11/1989.

The main functions of this Authority are as under:-

1. To provide housing facilities in Urban area of District Swat.
2. To execute all kinds of developmental schemes in the urban area duly financed by the provincial/Federal Govt.
3. Any other objectives/functions assigned by Provincial/Federal Govt.

DETAILS OF KANJU TOWNSHIP SWAT.

In order to solve the housing shortage & to provide serviced residential plots to the residents of District Swat, SDDA Swat has launched an area development scheme namely “Kanju Township Mingora Swat”.

The scheme is located on Kanju road at a distance of 02 KM from Mingora city and spread over an area of 553 Acres with PC-I cost of Rs.428.84 million. The Scheme envisage to provide 4203 No residential plots of various sizes (one kanal, 10-Marla, 05-Marla, 03-Marla) with allied facilities i/c Public utility and commercial plots.

Similarly SDDA Swat has acquired 176 Acres land for Phase-II, allotted 234 No residential plots of various sizes out of total 1485 No plots (one kanal, 10-Marla, 07-Marla, 05-Marla). The scheme is lying redundant since 1998 due to land dispute between SDDA Swat & Ex land owners/tenants.

STATEMENT SHOWING SECTOR WISE DETAILS OF ALLOTTED/UN ALLOTTED RESIDENTIAL PLOTS.

Total Area = 553 Acres (4424-kanal)

S.No	Sector	01-Kanal			10-Marla			05-Marla			03-Marla		
		Reserved	Allotted	Balance	Reserved	Allotted	Balance	Reserved	Allotted	Balance	Reserved	Allotted	Balance
1	A	72	72	Nil	243	243	Nil	294	293	01	196	195	01
2	B	99	66	33	180	168	12	72	70	02	317	303	14
3	C	188	188	Nil	146	143	03	616	616	Nil	-	-	-
4	D	92	92	Nil	117	111	06	516	492	24	-	-	-
5	E	100	86	14	583	492	91	-	-	-	-	-	-
6	F	372	274	98	-	-	-	-	-	-	-	-	-
Total.		923	778	145	1269	1157	112	1498	1471	27	513	498	15

(B) STATEMENT SHOWING SECTOR WISE DETAILS OF VARIOUS CATEGORY OF ALLOTTED/UN ALLOTTED PLOTS (PHASE-I).

(i) RESIDENTIAL PLOTS = 4203 No.

S.No	Sector	Reserved	Allotted	Balance Plots
1	A	805	803	02
2	B	668	607	61
3	C	950	947	03
4	D	725	695	30
5	E	683	578	105
6	F	372	274	98
Total.		4203 No	3904 No	299No

(ii) COMMERCIAL = 259-KANAL

S.No	Sector	Reserved	Allotted	Balance
1	Along approach road	06-Kanal	-	06-Kanal
2	A	10-Kanal	02-Kanal	08-Kanal
3	C	204-Kanal	03-Kanal	201-Kanal
4	D	02-Kanal	-	02-Kanal
5	E	01-Kanal	-	01-Kanal
6	F	36-Kanal	-	36-Kanal
Total.		259-Kanal	05-Kanal	254-Kanal

(iii) PUBLIC UTILITY = 291-KANAL

S.No	Sector	Reserved	Allotted	Balance
1	A	30-Kanal	-	30-Kanal
2	B	07-Kanal	-	07-Kanal
3	C	109-Kanal	ADBP 10-Kanal PIA 02-Kanal PTCL 16-Kanal Private Hospital 25-Kanal Private School (Functional) 11-Kanal <hr/> Total = 64-Kanal	45-Kanal
4	D	29-Kanal	Private School 20-Kanal	09-Kanal
5	E	88-Kanal	Forest Deptt; 14-Kanal C&W Colony 23-Kanal Govt;Girls degree College 25-Kanal Passport Office 04-Kanal Private Hospital 08-Kanal <hr/> Total = 74-Kanal	14-Kanal
6	F	28-Kanal	PRCS Hospital 08-Kanal	20-Kanal
Total.		291-Kanal	166-Kanal	125-Kanal

(iv) PUBLIC PARKS. = 32-KANAL

S.No	Sector	Developed	Non Developed
1	A	19-Kanal (03-No)	-
2	B	-	07-Kanal
3	F	-	06-Kanal
Total.		19-Kanal	13-Kanal

(C) SECTOR WISE DETAILS OF BALANCE PLOTS RESERVED FOR AUCTION PURPOSE (PHASE-I).

S.No	Sector	01-Kanal Plots	Allotted	Balance
1	A	05	05	-
2	B	39	06	33-No
3	C	19	19	-
4	D	02	02	-
5	E	15	01	14-No
6	F	109	11	98-No
Total		189	44	145-Nos

S.No	Sector	10-Marla Plots	Allotted	Balance
1	A	32	32	-
2	B	25	13	12-No
3	C	14	11	03-No
4	D	06	-	06-No
5	E	118	27	91-No
6	F	-	-	-
Total		195	83	112-Nos

S.No	Sector	05-Marla Plots	Allotted	Balance
1	A	15	14	01-No
2	B	02	-	02-No
3	C	28	28	-
4	D	31	07	24-No
5	E	-	-	-
6	F	-	-	-
Total		76	49	27-Nos

S.No	Sector	03-Marla Plots	Allotted	Balance
1	A	01	-	01-No
2	B	14	-	14-No
3	C	-	-	-
4	D	-	-	-
5	E	-	-	-
6	F	-	-	-
Total		15	-	15-Nos

(D) SECTOR WISE DETAILS OF COLONIZATION (PHASE-I).

S.No	Sector	01-Kanal	10-Marla	05-Marla	03-Marla	Total
1	A	73	67	100	60	300
2	B	25	63	07	100	195
3	C	54	51	202	-	307
4	D	17	14	34	-	65
5	E	23	72	-	-	95
6	F	26	-	-	-	26
Total		218	267	343	160	988

STATEMENT SHOWING SECTOR WISE DETAILS OF ALLOTTED/UN ALLOTTED RESIDENTIAL PLOTS (PHASE-II).

Total Area = 176-Acres (1408-Kanal).

S.No	Sector	01-Kanal			10-Marla			07-Marla			05-Marla		
		Reserved	Allotted	Balance	Reserved	Allotted	Balance	Reserved	Allotted	Balance	Reserved	Allotted	Balance
1	G	75	28	47	75	67	08	197	44	153	140	95	45
2	H	33	-	33	44	-	44	-	-	-	54	-	54
3	I	42	-	42	193	-	193	113	-	113	-	-	-
4	J	73	-	73	95	-	95	-	-	-	11	-	11
5	K	30	-	30	07	-	07	41	-	41	262	-	262
Total.		253	28	225	414	67	347	351	44	307	467	95	372

STATEMENT SHOWING SECTOR WISE DETAILS OF VARIOUS CATEGORY OF ALLOTTED/UN ALLOTTED PLOTS (PHASE-II).

(i). **RESIDENTIAL PLOTS** = 1485 No.

S.No	Sector	Reserved	Allotted	Balance Plots
1	G	487	234	253
2	H	131	-	131
3	I	348	-	348
4	J	179		179
4	K	340	-	340
Total.		1485 No	234 No	1251 No

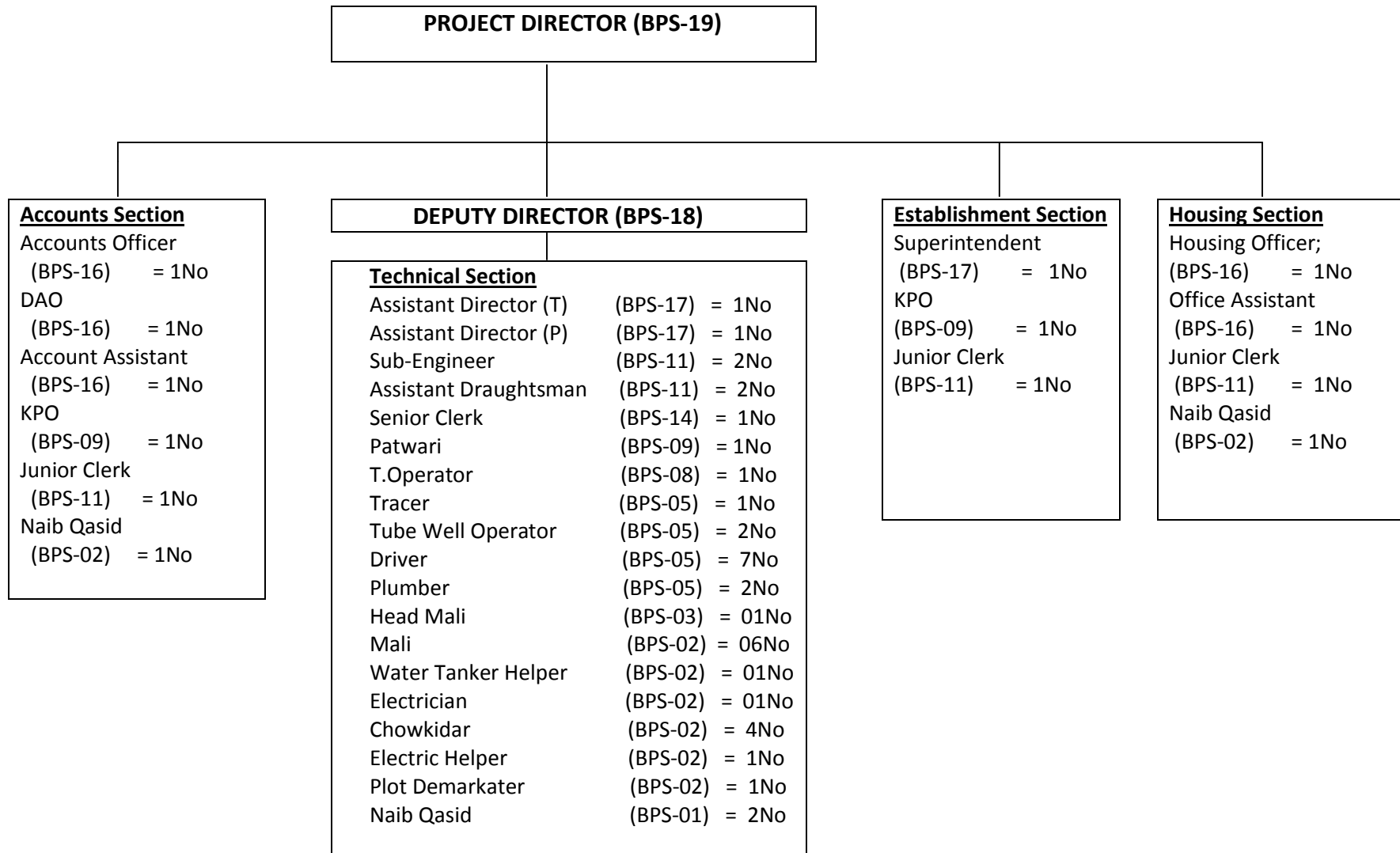
(ii). **COMMERCIAL** = 40-KANAL

S.No	Sector	Reserved	Allotted	Balance
1	H	20-Kanal	-	20-Kanal
2	K	19-Kanal	-	19-Kanal
3	I	01-Kanal	-	01-Kanal
Total		40-Kanal	-	40-Kanal

(iii). **PUBLIC UTILITY** = 69-KANAL

S.No	Sector	Reserved	Allotted	Balance
1	H	59-Kanal	-	59-Kanal
2	K	10-Kanal	-	10-Kanal
Total		69-Kanal	-	69-Kanal

ORGANIZATION CHART OF SWAT DISTRICT DEVELOPMENT AUTHORITY.



Detail of Existing Staff

- 1). Officers in (BPS-17) & above = 05-Nos
- 2). Officials in BPS-01 to 16 = 47-Nos

